

## **SCOTO – SCOTTISH COMMUNITY TOURISM GATHERING 2024**

### **29 February and 1 March 2024**

## **CHOOSE YOUR OPTIONS**

### **A: WAKE UP WORKSHOPS**

**29 February 9-10.30am**

Prior to the main conference programme there are three 1.5-hour workshops available for those staying overnight or who live locally.

Taking place between 9 and 10.30 there are three workshops to choose from. Numbers are restricted to 15 per workshops so do book early.

Each event has an interactive element and will be both fun and insightful – and are free to anyone booked to attend the main event.

#### **1. Empowering Community-Led Tourism: Collaboration with Your Local Climate Hub**

Joan Lawrie, Hub Manager from the Highlands and Islands Climate Hub CIC will join Steven Clark from the D&G Climate Hub to explore how you can work with your local climate hub to help address the climate emergency at a community level. Hands on re-use activity by EcoArt included!

#### **2. Discovering Dark Skies in Your Community**

Join the team behind the month-long Wester Ross Dark Skies Festival and Elizabeth Tindall freelance dark sky ranger to explore what you could be doing within your own community to celebrate and enjoy the dark skies above you with locals and visitors.

#### **3. Unlocking Scotland's UNESCO Designations for Community Tourism Success**

Scotland has two Biospheres. Natasha Hutchison from Wester Ross Biosphere and Esther Tacke and Marie McNulty from Galloway and South Ayrshire Biosphere will share their experiences of unlocking the UNESCO designations potential for community tourism, including a deep dive into the sustainable event charter and hearing more about Scotland's UNESCO Trail which profiles all our designations.

### **B: LEARNING EXCHANGES**

**1 March 2024, 8.30am – 2.30pm**

Six optional learning exchanges have been curated with each exchange visiting two-three community driven enterprises within a specific location in or close to Dumfries. Each group will be capped at 15 per visit including a SCOTO host.

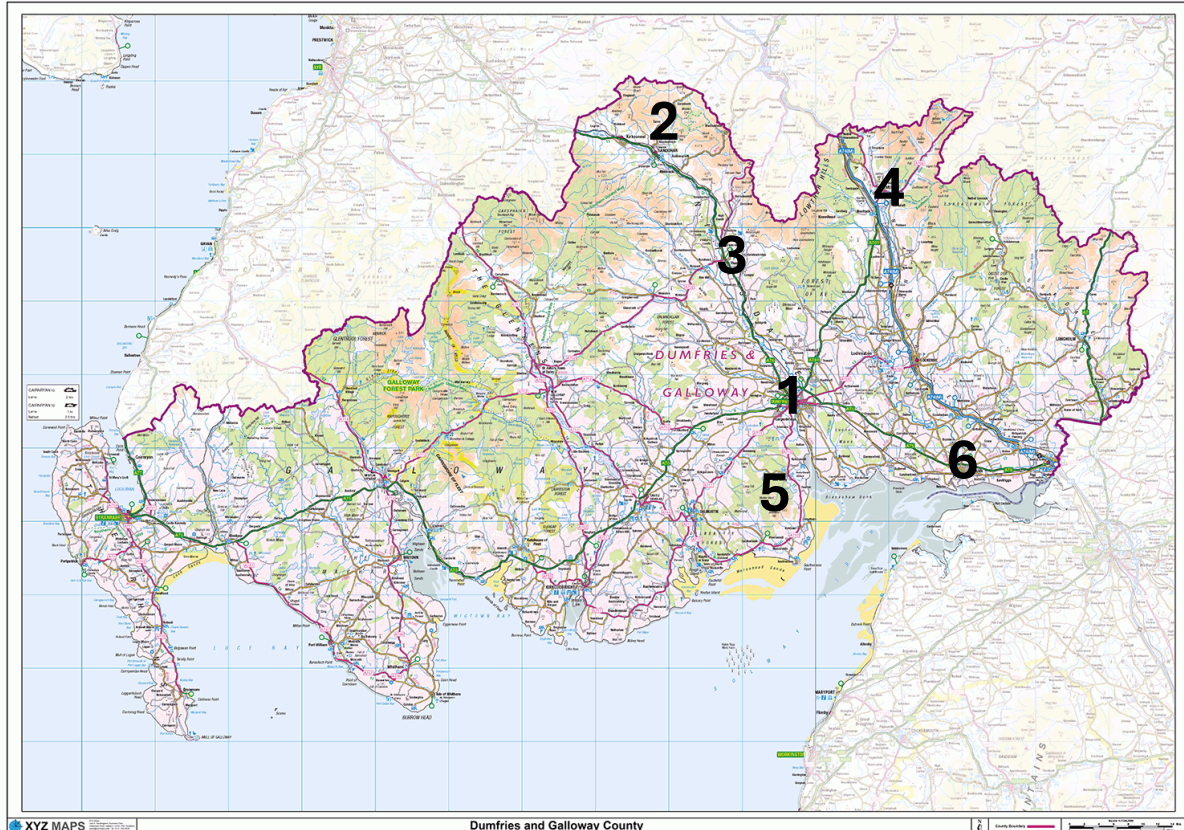
#### **Timing**

All to assemble at the Cairndale Empire Suite at 8.30am for tea and coffee and to join their group and meet their host for an initial briefing. Depart by 9am. We are looking at different transport arrangements for each – one is on foot and at least one will have a minibus, others will involve car share.

## Onward Travel

We ask the participants to share their onward travel plans to allow us to arrange the most appropriate transport. Some may be heading home from the final visit location and others returning to the Cairndale in Dumfries for the train or car share arrangements.

## LEARNING EXCHANGE LOCATIONS:



## LEARNING EXCHANGE THEMES AND PARTNERS:

REF	LOCATION	THEME	VISITS
1	DUMFRIES	Creative Places and Community Cafes	The Stove and The Usual Place
2	THORNHILL	Community Hubs and Active Travel	The Old School Thornhill and KPT
3	MOFFAT	Outdoor Festivals and Dark Skies	Moffat Walking Weekend, Moffat Golden Eagle Festival and Moffat Dark Skies Observatory
4	UPPER NITHSDALE	Cultural Heritage and the Arts	A' the Airts, Crawick Multiverse and Museum of Leadmining
5	NEW ABBEY	Creativity and Food	Shambellie House and Loch Arthur Farm Shop and Cafe
6	ANNAN	Industrial Heritage and Regeneration	Annan Harbour and The Devils Porridge Museum

## LEARNING EXCHANGE PARTNERS

### 1. DUMFRIES

**The Stove Network:** The Stove Network is an arts and community organisation in Dumfries and Galloway, that uses arts practice to facilitate community-led development, placemaking, projects and decision-making from a foundation in community engagement. They run a community-led programme from their venue on Dumfries Highstreet and are the co-ordinating hub for 'What We Do Now', a regional network in creative placemaking. They are a successful social enterprise, SURF award winner for Creative Regeneration (2016), and the first artist-led Development Trust in the UK. The Stove has grown an internationally recognised practice in creative placemaking and is involved in policy influence and consultancy at national and international levels.

<https://thestove.org/>

**The Usual Place:** The Usual Place is an award-winning organisation, World Host Destination and a Disability Confident Leader. The Usual Place opened its doors as a community café in 2015 and is the brainchild of CEO Heather Hall. Operating as a community café, the Usual Place offers freshly prepared breakfast, lunch, light snacks, afternoon teas and takeaways. They also have a shop selling gifts and toys. The Usual Place is a social enterprise providing training, education and employability skills for young people with additional support needs. The Usual Place is based in a famous historic building and every area is fully accessible and wheelchair friendly. There is an award-winning Changing Places Toilet.

<https://www.theusualplace.org/>

### 2. UPPER NITHSDALE - SANQUHAR AND WANLOCKHEAD

**A'the Airts:** A'the Airts is a community art centre and café in Sanquhar which is run by the Upper Nithsdale Arts and Crafts Community Initiative (UNACCI). The shop is a great place to browse unique Sanquhar Pattern knitwear and accessories some of which are made on the premises – and some exclusive to A'the Airts – and a superb variety of wares from local crafters. Additional facilities include workrooms, a theatre & exhibition gallery.

<https://atheairts.org.uk/>

**Crawick Multiverse:** Crawick Multiverse is a land art project by the landscape architect and designer Charles Jencks located near Sanquhar, Dumfries and Galloway. It opened to the public on 21 June 2015. The project is located on the site of a former open cast coal mine and covers approximately 55 acres, making it the largest of Jencks's works in Britain. It is owned and managed by the Crawick Multiverse Trust.

<https://www.crawickmultiverse.co.uk/>

**Museum of Leadmining, Wanlockhead:** Wanlockhead Museum Trust was formed in 1974 with a vision of bringing the culture and history of the mining community back to life. The current Visitor Centre was built in 1992 and incorporates the Old Smithy. In 2007 the collection of artefacts held at the museum was recognised by Museum Galleries Scotland to be of national importance. The independent museum is run by the volunteer trustees of the charitable trust (SCIO), Wanlockhead Museum Trust. It is funded entirely by admission fees and donations and has the only underground min tour in Scotland (included in the learning exchange)

<https://www.leadminingmuseum.co.uk/>

### **3. THORNHILL AND KPT**

**Thornhill Old School:** “In 2017 we came together with an idea to buy and transform our ‘Old School’ into an innovative, design-led, community asset - a space that would foster creative collaboration and benefit our village and the surrounding communities.” The Old School is being redeveloped into an innovative entrepreneurial space which will support community groups, charities, small businesses, freelancers, artists and creatives based locally. Having raised over £2.5m, building work is nearing completion and The Collective plan to open soon in 2024.

<https://www.oldschoolthornhill.com/>

**KPT Development Trust:** The focus of the KPT Development Trust is the economic, environmental and rural regeneration of the three communities of Kier, Penpont and Tynron close to Thornhill. The development trust is committed to reducing their carbon footprint as well as implementing green initiatives that will encourage individual behaviour change. The Trust is continually aiming to overcome a barrier to more people cycling: a lack of confidence and access to training. They have recently completed a game changing active travel path benefitting the three villages and nearby Thornhill. The Trust has also developed a hydro scheme and has a community garden and café which is enjoyed by locals and visitors. They have e-bikes for hire and have installed bike repair stations.

[https://www.facebook.com/KPTDevTrust/?locale=en\\_GB](https://www.facebook.com/KPTDevTrust/?locale=en_GB)

### **4. MOFFAT**

**Moffat Walking Weekend** – This three-day annual weekend event offers choices from long distance trails and easy walks to family friendly adventures and treks around the town of Moffat. It takes place at the end of September and is led by Walk Moffat.

<https://www.walkmoffat.co.uk/>

**Moffat Dark Skies Town and Observatory:** Moffat has the title of Europe's very first Dark Sky Town, having adopted special street lighting to keep light pollution to a minimum to preserve the great starry skies above the area. In 2021 the Moffat Community Observatory was opened is a venue for regular public star gazing sessions.

[https://www.facebook.com/p/Moffat-Astronomy-Club-100082263254966/?paipv=0&eav=AfavZpRcAJxinvdzBpJx7xGAIBD1qiP8xnXYBX4U2-rqalzpYrzEAnOqIJBWlthRw1E&\\_rdr](https://www.facebook.com/p/Moffat-Astronomy-Club-100082263254966/?paipv=0&eav=AfavZpRcAJxinvdzBpJx7xGAIBD1qiP8xnXYBX4U2-rqalzpYrzEAnOqIJBWlthRw1E&_rdr)

**Moffat Golden Eagle Festival:** The Moffat Golden Eagle Festival takes place in Scotland's First and Only 'Eagle Town' with a fantastic line-up of guest speakers, guided walks, activities, food & drink and live music to celebrate the increasing Golden Eagle population in the South of Scotland.

<https://www.goldeneaglessouthofscotland.co.uk/outreach/moffat-2023>

## **5. NEW ABBEY**

**Loch Arthur Camphill Community Farm Shop and Café:** Loch Arthur is a working community near Dumfries, Southwest Scotland, which includes men and women with learning disabilities. There are eleven houses in which altogether more than 75 people live, including about twenty-eight people in supported tenancies. There is a farm, a large garden, a creamery, a bakery, craft workshops and a thriving farm shop and cafe.

<https://locharthur.org.uk/farm-shop-cafe/>

**Shambellie House:** Shambellie House was designed by David Bryce a leading Victorian Architect and completed in 1860 for William Stewart. The Stewarts and their descendants were to occupy the house continually until 1977 when it was given, along with his collection of 2,000 costumes and accessories, to the National Museum of Scotland by Charles Stewart and opened as the National Museum of Costume in 1982. It closed in 2013 and is now managed by the Shambellie House Trust who operate it as a creative centre for arts, heritage and environmental courses, workshops and events.

<https://www.shambelliehouse.org/>

## **6. ANNAN**



**Annan Harbour:** Annan Harbour was key to the economy of the town of Annan through shipbuilding, commerce and fishing. Today it is still a vital part of the town's identity. Although trade and fishing declined in the second half of the 20th Century, a community led group has been formed with the aim of restoring the harbour into productive use. This group consists of a range of bodies including Annan Harbour Action Group (AHAG) and the Annan Harbour Coastal Rowers. Work has already started with a range of infrastructure improvements, revived boatbuilding and a programme of events to promote harbour usage.

<https://www.annanharbour.org.uk/>

**The Devil's Porridge Museum:** The Devil's Porridge Museum tells the story of HM Factory Gretna, the greatest munitions factory on earth in World War One, where the devil's porridge (or cordite, an explosive) was mixed. There were 30,000 workers: 12,000 of them were women. Their contribution to the war effort helped women to achieve the vote. In 2023, The Devil's Porridge Museum was the Winner of the Celebrating Thriving Communities Award at the South of Scotland Thistle Award Regional Finals and in 2022 the museum was the Winner of Best Visitor Attraction Experience in the West of Scotland at the Thistle Award's Regional Finals.

<https://www.devilsporridge.org.uk/>

16 Feb 2024